

# > Protecting SAP HANA Application Server with Arcserve® Backup

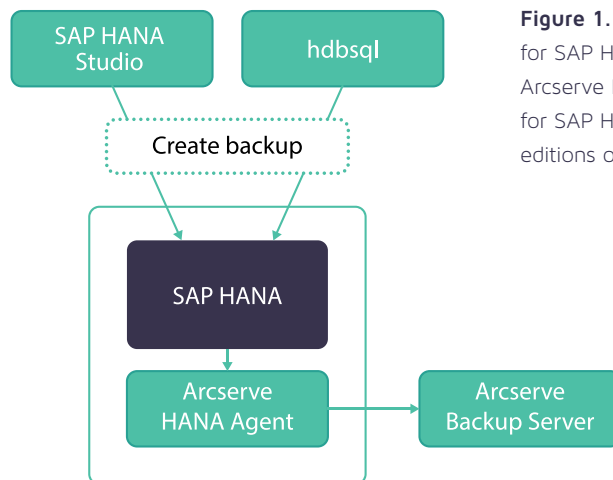
SAP HANA is an in-memory platform for advanced data processing and next-generation applications. Developed and marketed by SAP SE, it enables organizations to accelerate database processing and removes the burden of managing separated legacy systems and siloed data.

To protect and recover SAP HANA data, Arcserve offers its industry-proven Arcserve® Backup Enterprise Option for SAP HANA that allows you to:

- Back up a complete HANA database online
- Recover a complete HANA database
- Back up to a wide array of storage devices

The Arcserve Backup Enterprise Option for SAP HANA manages all communication between it and the SAP HANA database server while data is being backed up and restored. This communication includes preparing, retrieving and processing the data sent back and forth across the network while enabling you to process jobs efficiently, without interrupting operations.

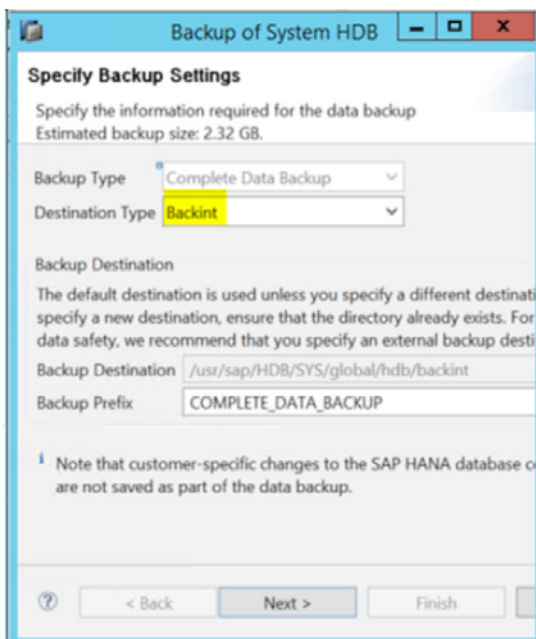
When a backup request is made, the Enterprise Option for SAP HANA contacts the database, retrieves the necessary data and sends it to Arcserve Backup, where it backs up the objects to storage devices. For recovery, Arcserve Backup retrieves the objects that you want to restore from the storage devices and passes them to the Enterprise Option for SAP HANA. The Enterprise Option for SAP HANA then writes this data to the database, completing the recovery process.



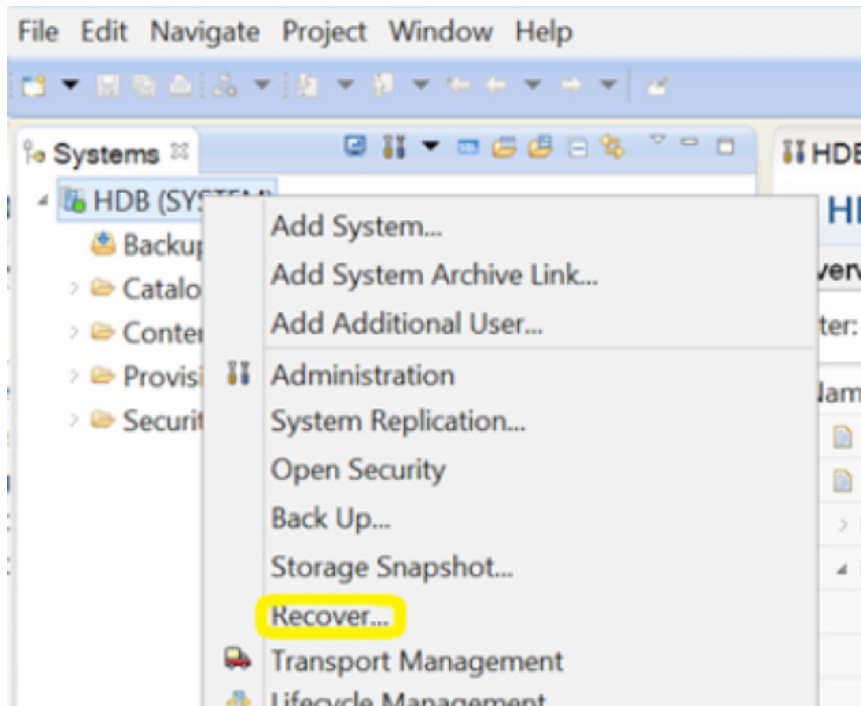
**Figure 1.** Enterprise Option for SAP HANA Architecture. Arcserve Backup Enterprise Option for SAP HANA supports all editions of SAP HANA.

Function	Description
SAP HANA Integration	Enterprise Option for SAP HANA is fully integrated with SAP HANA Studio and hdbsql command line for backup and recovery operations.
Job Monitoring	Backup and restore jobs that you submit from HANA Studio or from hdbsql command line interface are centrally monitored from Arcserve Backup Job Status Manager.
Online Database Backup	You can perform the SAP HANA online database backup using BACKINT. SAP HANA provides BACKINT interface to the third party vendors to implement backups\recoveries to external storage devices. (Figure Two.)
Log Backups	You configure the log backups from SAP HANA Studio using file destination or BACKINT; whichever is configured. Log backups are carried out automatically unless disabled.
Database Recovery	You restore SAP HANA database using SAP HANA Studio. (Figure Three.) Three recovery methods are supported: recover to most recent state, recover to specific time and recover to a specific data backup.
Enhanced Destination Options	Enterprise Option for SAP HANA lets you specify different destination tapes for each day of the week in single stream mode or specify media pools. Using the enhanced destination options, you can better organize your backup tapes.

Figure 2. Example showing a database backup in SAP HANA Studio



**Figure 3.** Example showing a database recovery in SAP HANA Studio all editions of SAP HANA.



For more information on Arcserve, please visit [arcserve.com](http://arcserve.com)