

# Descubra o que há de novo com Experiências de gerenciamento do Windows Server

Fabio Hara, PMM

@fabiohara

[Github.com/fabioharams](https://github.com/fabioharams)

# Foco desta sessão

## Principais experiências de gerenciamento gráfico para o Windows Server



Experiências de gerenciamento de servidor: evolução de ferramentas "in-box", o que há de novo e o que vem a seguir.

Complementar ao System Center e OMS; Não substitui e não são concorrentes.

# Nossa viagem de gerenciamento de servidores

WS 2008



Servidor único  
**local** gestão

WS 2008 R2



Servidor único  
**remoto** gestão

WS 2012/2012 R2



**Multi-Server**  
gerenciamento remoto

WS 2016

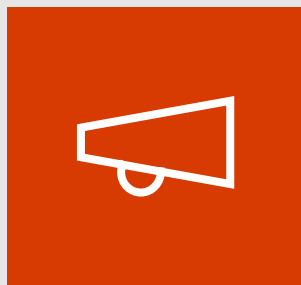


**Baseado em nuvem**  
gestão  
de qualquer lugar,  
hospedado em Azure

WS semi-Annual releases



**Flexível,  
implantado pelo cliente**  
gestão baseada em navegador



Anunciando o projeto "Honolulu" Technical Preview

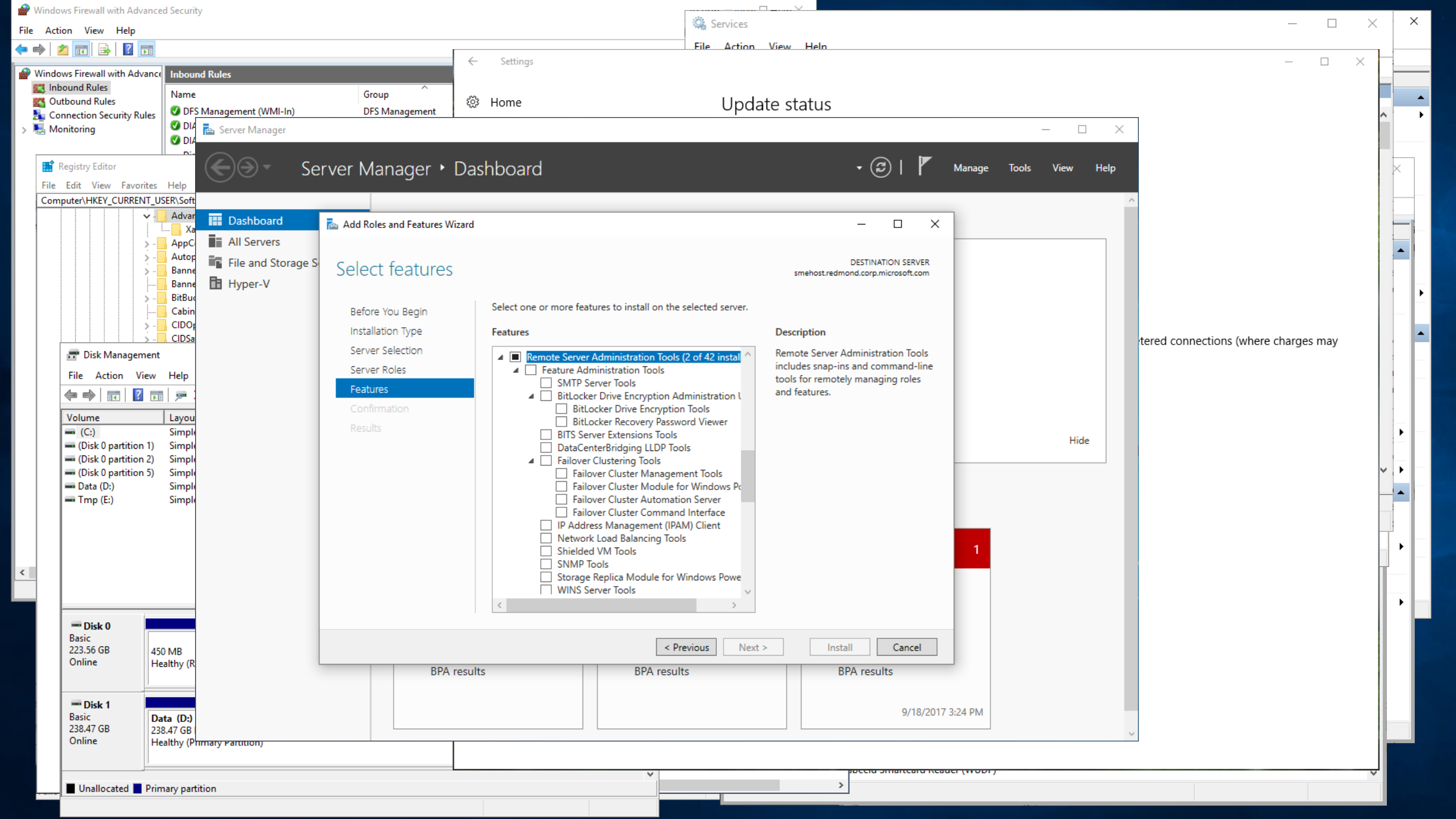
Gerenciamento baseado em navegador flexível e implantado pelo cliente

Ferramentas principais para solução de problemas, configuração e manutenção

Demo

"Honolulu"

Fabio Hara



- Windows Firewall with Advanced Security
- Inbound Rules
- Outbound Rules
- Connection Security Rules
- Monitoring

Name	Group
DFS Management (WMI-In)	DFS Management
...	...

Computer\HKEY\_CURRENT\_USER\Software

Volume	Layout
(C:)	Simple
(Disk 0 partition 1)	Simple
(Disk 0 partition 2)	Simple
(Disk 0 partition 5)	Simple
Data (D:)	Simple
Tmp (E:)	Simple

<b>Disk 0</b>	Basic	223.56 GB	450 MB	Healthy (R)
<b>Disk 1</b>	Basic	238.47 GB	Data (D:)	Healthy (Primary Partition)

Unallocated Primary partition

# Update status

## Server Manager Dashboard

- Dashboard
- All Servers
- File and Storage S...
- Hyper-V

### Add Roles and Features Wizard

## Select features

- Before You Begin
- Installation Type
- Server Selection
- Server Roles
- Features**
- Confirmation
- Results

Select one or more features to install on the selected server.

#### Features

- Remote Server Administration Tools (2 of 42 installed)
  - Feature Administration Tools
    - SMTP Server Tools
  - BitLocker Drive Encryption Administration Tools
    - BitLocker Drive Encryption Tools
    - BitLocker Recovery Password Viewer
  - BITS Server Extensions Tools
  - DataCenterBridging LLDP Tools
  - Failover Clustering Tools
    - Failover Cluster Management Tools
    - Failover Cluster Module for Windows PowerShell
    - Failover Cluster Automation Server
    - Failover Cluster Command Interface
  - IP Address Management (IPAM) Client
  - Network Load Balancing Tools
  - Shielded VM Tools
  - SNMP Tools
  - Storage Replica Module for Windows PowerShell
  - WINS Server Tools

#### Description

Remote Server Administration Tools includes snap-ins and command-line tools for remotely managing roles and features.

DESTINATION SERVER  
smehost.redmond.corp.microsoft.com

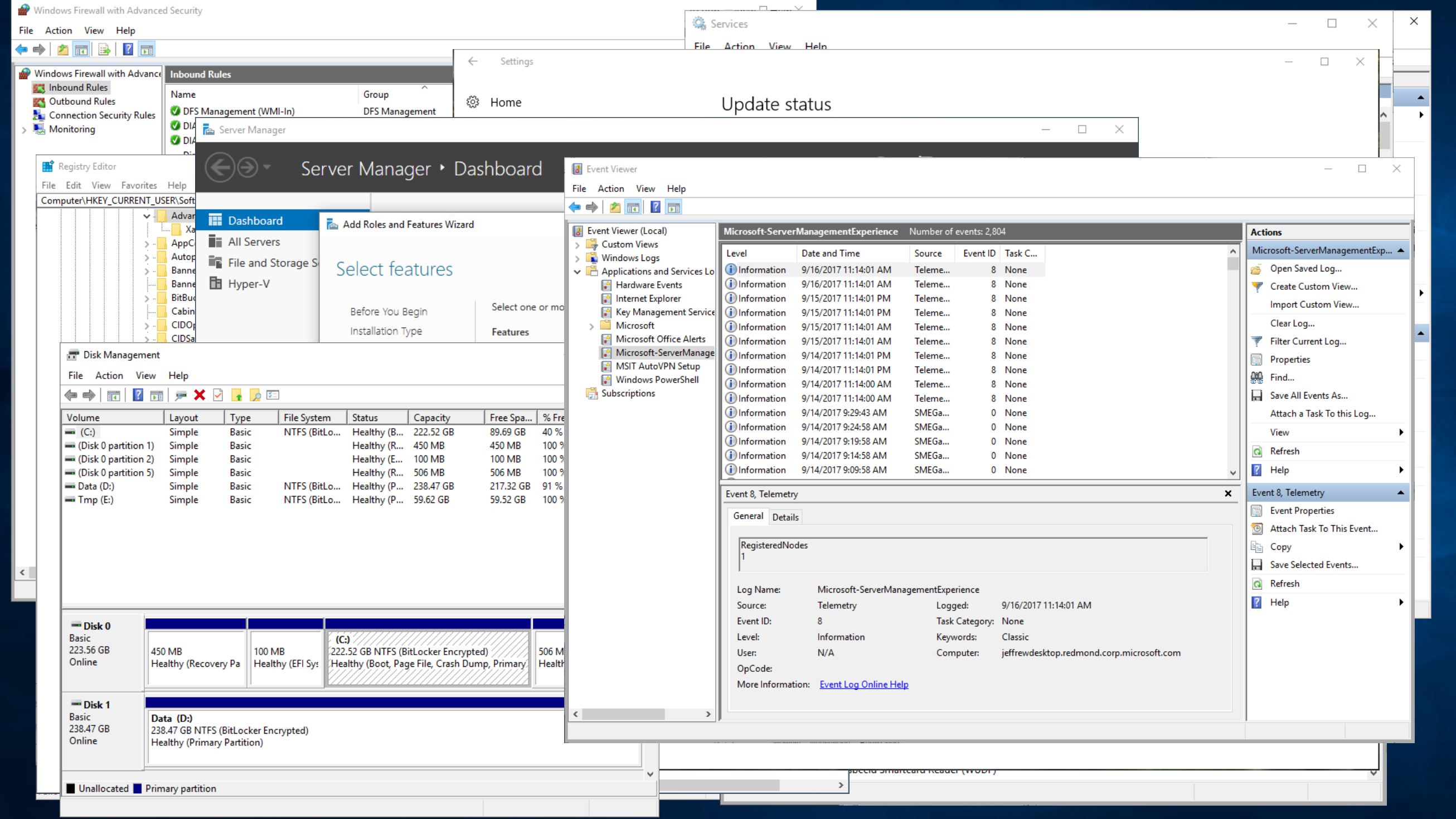
Hide

< Previous Next > Install Cancel

BPA results	BPA results	BPA results
		9/18/2017 3:24 PM

tered connections (where charges may

1



### Windows Firewall with Advanced Security

**Inbound Rules**

Name	Group
DFS Management (WMI-In)	DFS Management
...	...

## Update status

Computer\HKEY\_CURRENT\_USER\Soft

- Adva
- Xa
- AppC
- Autop
- Banne
- Banne
- BitBud
- Cabin
- CIDOP
- CIDSa

## Server Manager Dashboard

### Dashboard

**Select features**

Before You Begin

Installation Type

Select one or mo

Features



Volume	Layout	Type	File System	Status	Capacity	Free Spa...	% Fre
(C:)	Simple	Basic	NTFS (BitLo...	Healthy (B...	222.52 GB	89.69 GB	40 %
(Disk 0 partition 1)	Simple	Basic		Healthy (R...	450 MB	450 MB	100 %
(Disk 0 partition 2)	Simple	Basic		Healthy (E...	100 MB	100 MB	100 %
(Disk 0 partition 5)	Simple	Basic		Healthy (R...	506 MB	506 MB	100 %
Data (D:)	Simple	Basic	NTFS (BitLo...	Healthy (P...	238.47 GB	217.32 GB	91 %
Tmp (E:)	Simple	Basic	NTFS (BitLo...	Healthy (P...	59.62 GB	59.52 GB	100 %

### Disk 0

Basic  
223.56 GB  
Online

Layout	Type	File System	Status
450 MB Healthy (Recovery Pa	100 MB Healthy (EFI Sys	222.52 GB NTFS (BitLocker Encrypted)	Healthy (Boot, Page File, Crash Dump, Primary

### Disk 1

Basic  
238.47 GB  
Online

Layout	Type	File System	Status
Data (D:) 238.47 GB NTFS (BitLocker Encrypted)			Healthy (Primary Partition)

■ Unallocated ■ Primary partition



### Event Viewer (Local)

- Custom Views
- Windows Logs
- Applications and Services Lo
  - Hardware Events
  - Internet Explorer
  - Key Management Service
  - Microsoft
    - Microsoft Office Alerts
    - Microsoft-ServerManage
    - MSIT AutoVPN Setup
    - Windows PowerShell
  - Subscriptions

### Microsoft-ServerManagementExperience

Number of events: 2,804

Level	Date and Time	Source	Event ID	Task C...
Information	9/16/2017 11:14:01 AM	Teleme...	8	None
Information	9/16/2017 11:14:01 AM	Teleme...	8	None
Information	9/15/2017 11:14:01 PM	Teleme...	8	None
Information	9/15/2017 11:14:01 PM	Teleme...	8	None
Information	9/15/2017 11:14:01 AM	Teleme...	8	None
Information	9/15/2017 11:14:01 AM	Teleme...	8	None
Information	9/14/2017 11:14:01 PM	Teleme...	8	None
Information	9/14/2017 11:14:01 PM	Teleme...	8	None
Information	9/14/2017 11:14:00 AM	Teleme...	8	None
Information	9/14/2017 11:14:00 AM	Teleme...	8	None
Information	9/14/2017 9:29:43 AM	SMEGa...	0	None
Information	9/14/2017 9:24:58 AM	SMEGa...	0	None
Information	9/14/2017 9:19:58 AM	SMEGa...	0	None
Information	9/14/2017 9:14:58 AM	SMEGa...	0	None
Information	9/14/2017 9:09:58 AM	SMEGa...	0	None

### Event 8, Telemetry

General Details

RegisteredNodes  
1

Log Name: Microsoft-ServerManagementExperience  
Source: Telemetry Logged: 9/16/2017 11:14:01 AM  
Event ID: 8 Task Category: None  
Level: Information Keywords: Classic  
User: N/A Computer: jeffredesktop.redmond.corp.microsoft.com  
OpCode:  
More Information: [Event Log Online Help](#)

### Actions

- Open Saved Log...
- Create Custom View...
- Import Custom View...
- Clear Log...
- Filter Current Log...
- Properties
- Find...
- Save All Events As...
- Attach a Task To this Log...
- View
- Refresh
- Help

### Event 8, Telemetry

- Event Properties
- Attach Task To This Event...
- Copy
- Save Selected Events...
- Refresh
- Help

# smehost.redmond.corp.microsoft.com

## Tools

Search Tools

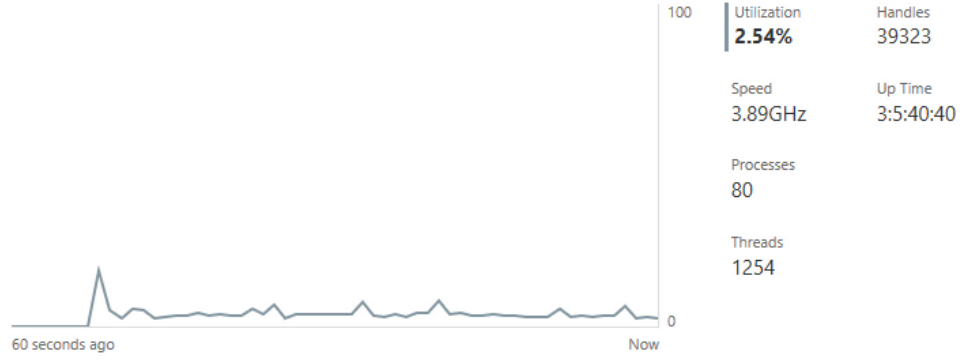
- Overview
- Certificates
- Devices
- Events
- Files
- Firewall
- Local Users & Groups
- Network
- Processes
- Registry
- Roles & Features
- Services
- Storage
- Storage Replica
- Virtual Machines
- Virtual Switches
- Windows Update

## Overview

- Restart
- Shutdown
- Disable Disk Metrics
- Edit Computer ID
- Settings
- Refresh

Server Name: SMEHOST	Domain: redmond.corp.microsoft.com	Operating System: Microsoft Windows Server 2016 Datacenter	Installed Memory (RAM): 32 GB	Total Disk Space: 2.27 TB
Processors: Intel(R) Core(TM) i7-4790 CPU @ 3.60GHz	Manufacturer: Dell Inc.	Model: Precision T1700	Logical Processors: 8	Free Disk Space: 1.73 TB
NIC(s) 3				

### CPU



### Memory



### Ethernet (vEthernet (InTRAnet))



### Ethernet (vEthernet (External))



# smehost.redmond.corp.microsoft.com

## Tools

Search Tools

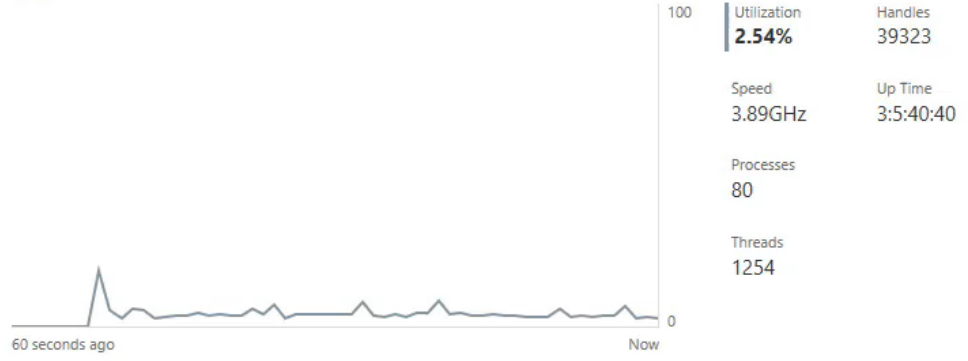
- Overview
- Certificates
- Devices
- Events
- Files
- Firewall
- Local Users & Groups
- Network
- Processes
- Registry
- Roles & Features
- Services
- Storage
- Storage Replica
- Virtual Machines
- Virtual Switches
- Windows Update

## Overview

- Restart
- Shutdown
- Disable Disk Metrics
- Edit Computer ID
- Settings
- Refresh

Server Name: SMEHOST	Domain: redmond.corp.microsoft.com	Operating System: Microsoft Windows Server 2016 Datacenter	Installed Memory (RAM): 32 GB	Total Disk Space: 2.27 TB
Processors: Intel(R) Core(TM) i7-4790 CPU @ 3.60GHz	Manufacturer: Dell Inc.	Model: Precision T1700	Logical Processors: 8	Free Disk Space: 1.73 TB
NIC(s) 3				

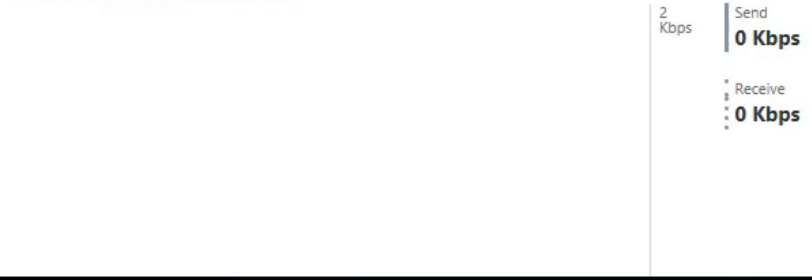
### CPU



### Memory



### Ethernet (vEthernet (InTRAnet))



### Ethernet (vEthernet (External))







Overview

Certificates

Devices

Events

Files

Firewall

Local Users &amp; Groups

Network

Processes

Registry

Roles &amp; Features

Services

Storage

Storage Replica

Virtual Machines

Virtual Switches

Windows Update

Server Name:

SMEHOST

Domain:

redmond.corp.microsoft.com

Operating System:

Microsoft Windows Server 2016 Datacent

Processors:

Intel(R) Core(TM) i7-4790 CPU @ 3.60GHz

Manufacturer:

Dell Inc.

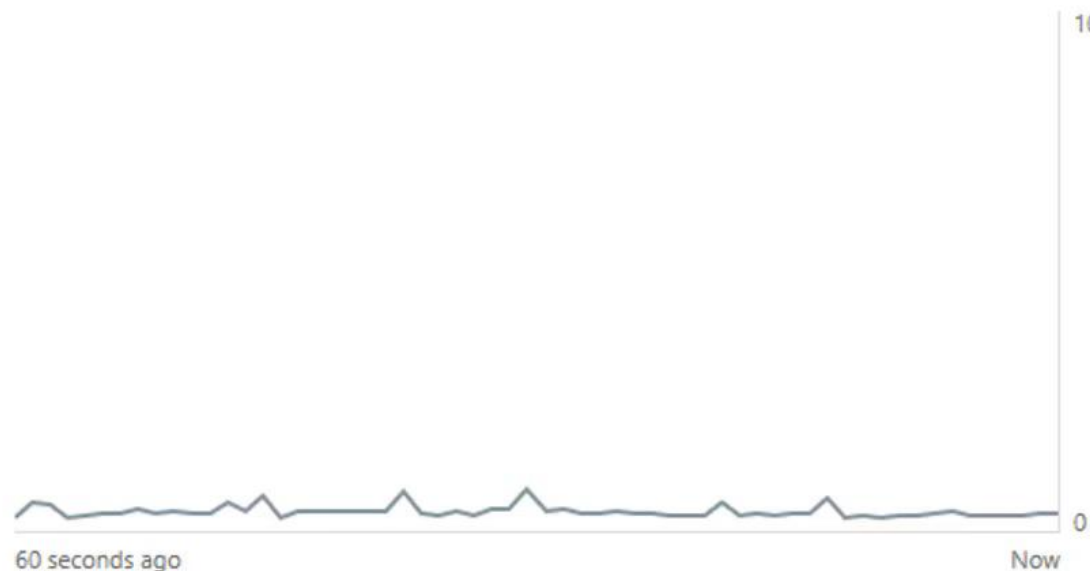
Model:

Precision T1700

NIC(s)

3

## CPU



100

Utilization

**3.26%**

Handles

39331

Speed

3.89GHz

Up Time

3:5:40:50

Processes

80

Threads

1254

## Memory

60 seconds ago

## Ethernet (vEthernet (InTRANet))

2 Kbps

Send

**0 Kbps**

Receive

## Ethernet (v

- smehost.red
- Tools
- Search Tools
- Overview
- Certificates
- Devices
- Events
- Files
- Firewall
- Local Users & Groups
- Network
- Processes
- Registry
- Roles & Features

- Installed Solutions
- Server Manager
  - Failover Cluster Manager
  - Hyper-Converged Cluster Manager

- Shutdown
- Disable Disk Metrics
- Edit Computer ID
- Settings
- Refresh

SMEHOST	Domain: redmond.corp.microsoft.com	Operating System: Microsoft Windows Server 2016 Datacent
Processors: Intel(R) Core(TM) i7-4790 CPU @ 3.60GHz	Manufacturer: Dell Inc.	Model: Precision T1700
NIC(s) 3		

CPU	100	Utilization <b>2.87%</b>	Handles 39356	Memory
		Speed 3.89GHz	Up Time 3:5:40:57	
		Processes 11		

# smehost.redmond.corp.microsoft.com

## Tools

Search Tools

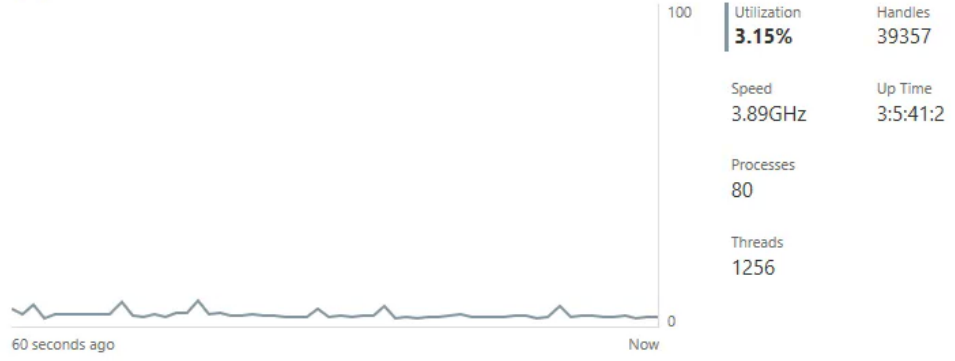
- Overview
- Certificates
- Devices
- Events
- Files
- Firewall
- Local Users & Groups
- Network
- Processes
- Registry
- Roles & Features
- Services
- Storage
- Storage Replica
- Virtual Machines
- Virtual Switches
- Windows Update

## Overview

- Restart
- Shutdown
- Disable Disk Metrics
- Edit Computer ID
- Settings
- Refresh

Server Name: SMEHOST	Domain: redmond.corp.microsoft.com	Operating System: Microsoft Windows Server 2016 Datacenter	Installed Memory (RAM): 32 GB	Total Disk Space: 2.27 TB
Processors: Intel(R) Core(TM) i7-4790 CPU @ 3.60GHz	Manufacturer: Dell Inc.	Model: Precision T1700	Logical Processors: 8	Free Disk Space: 1.73 TB
NIC(s) 3				

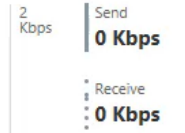
### CPU



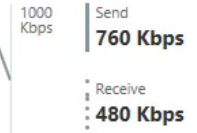
### Memory



### Ethernet (vEthernet (InTRAnet))



### Ethernet (vEthernet (External))



# smehost.redmond.corp.microsoft.com

## Tools

Search Tools

- Overview
- Certificates
- Devices
- Event Viewer
- File History
- Firewall
- Local Disk
- Network
- Processes
- Reliability
- Roles
- Services
- Storage
- Storage Replica
- Virtual Machines
- Virtual Switches
- Windows Update

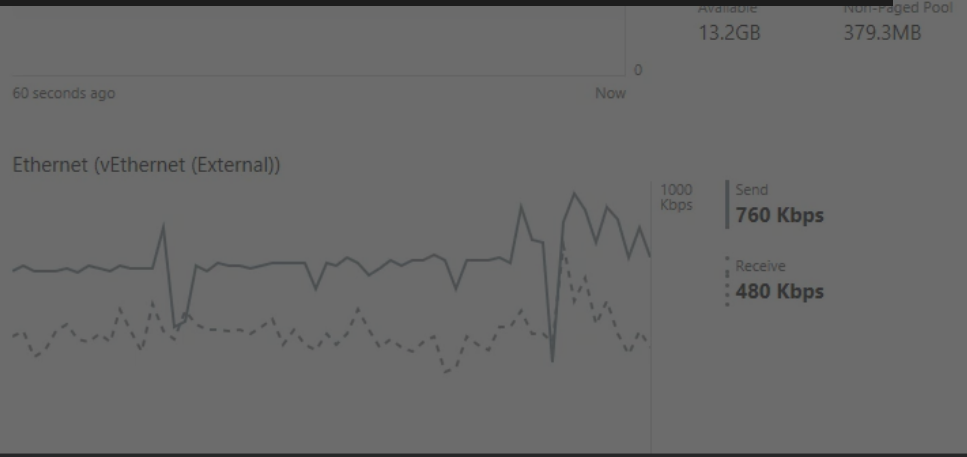
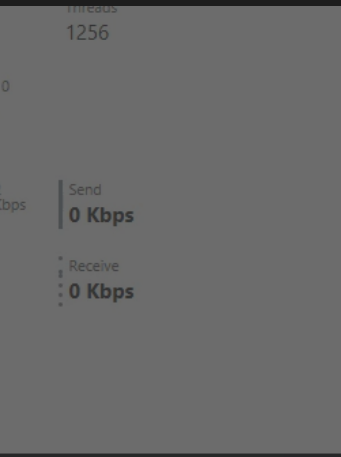
## Overview

Restart Shutdown Disable Disk Metrics Edit Computer ID Settings Refresh

Server Name:	Domain:	Operating System:	Installed Memory (RAM):	Total Disk Space:
SMEHOST	redmond.corp.microsoft.com	Microsoft Windows Server 2016 Datacenter	32 GB	2.27 TB
Processors:	Manufacturer:	Model:	Logical Processors:	Free Disk Space:
Intel(R) Core(TM) i7-4790 CPU @ 3.60GHz	Dell Inc.	Precision T1700	8	1.73 TB

**[-] jmp242** 7 points 3 days ago

The big thing is if it needs yet another windows server, and I can't just next - next - done install it, I'm unlikely to deal with it.





File Explorer window showing the properties of a file named ProjectHonolulu.msi. The file is located in E:\demo and is a Windows Installer Package (.msi).

**ProjectHonolulu.msi Properties**

- General: ProjectHonolulu.msi
- Type of file: Windows Installer Package (.msi)
- Opens with: Windows® installer
- Location: E:\demo
- Size: 30.3 MB (31,789,056 bytes)
- Size on disk: 29.7 MB (31,219,712 bytes)
- Created: Today, September 18, 2017, 47 minutes ago
- Modified: Today, September 18, 2017, 1 hour ago
- Accessed: Today, September 18, 2017, 45 minutes ago
- Attributes:  Read-only  Hidden

2 items 1 item selected 30.3 MB

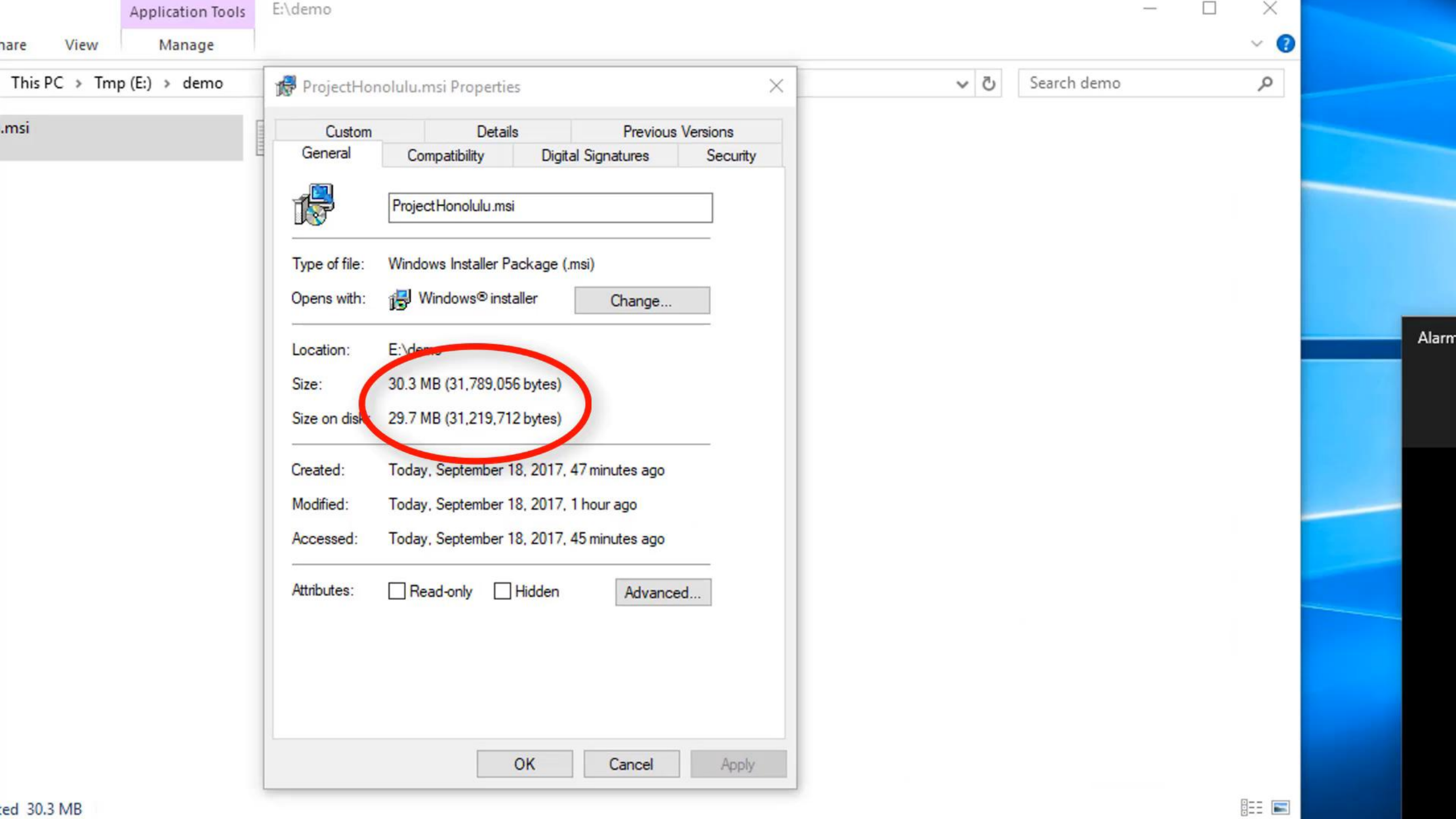
Alarms & Clock application interface showing a stopwatch timer.

Alarms & Clock

- Alarm
- World Clock
- Timer
- Stopwatch

00:00:00.00

Navigation icons: Refresh, Play, Share



ProjectHonolulu.msi Properties

Custom Details Previous Versions

General Compatibility Digital Signatures Security

ProjectHonolulu.msi

Type of file: Windows Installer Package (.msi)

Opens with: Windows® installer Change...

Location: E:\demo

Size: 30.3 MB (31,789,056 bytes)

Size on disk: 29.7 MB (31,219,712 bytes)

Created: Today, September 18, 2017, 47 minutes ago

Modified: Today, September 18, 2017, 1 hour ago

Accessed: Today, September 18, 2017, 45 minutes ago

Attributes:  Read-only  Hidden Advanced...

OK Cancel Apply





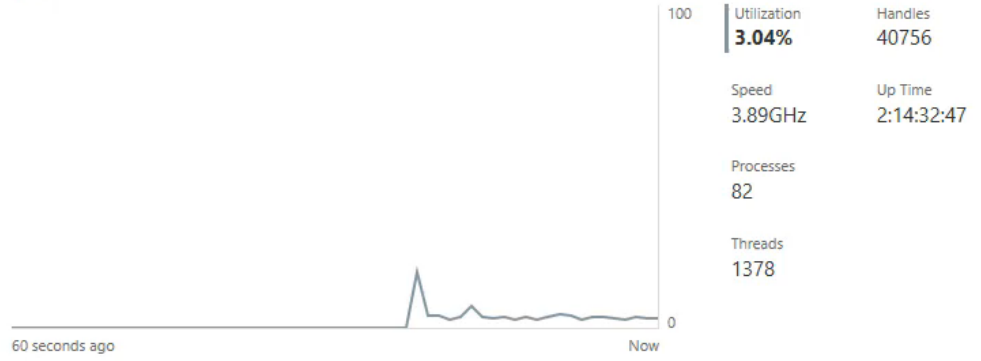
- Tools
- Search Tools
- Overview
- Certificates
- Devices
- Events
- Files
- Firewall
- Local Users & Groups
- Network
- Processes
- Registry
- Roles & Features
- Services
- Storage
- Storage Replica
- Virtual Machines
- Virtual Switches
- Windows Update

### Overview

- Restart
- Shutdown
- Disable Disk Metrics
- Edit Computer ID
- Settings
- Refresh

Server Name: SMEHOST	Domain: redmond.corp.microsoft.com	Operating System: Microsoft Windows Server 2016 Datacenter	Installed Memory (RAM): 32 GB
Total Disk Space: 2.27 TB	Processors: Intel(R) Core(TM) i7-4790 CPU @ 3.60GHz	Manufacturer: Dell Inc.	Model: Precision T1700
Logical Processors: 8	Free Disk Space: 1.73 TB	NIC(s): 3	

### CPU



### Memory



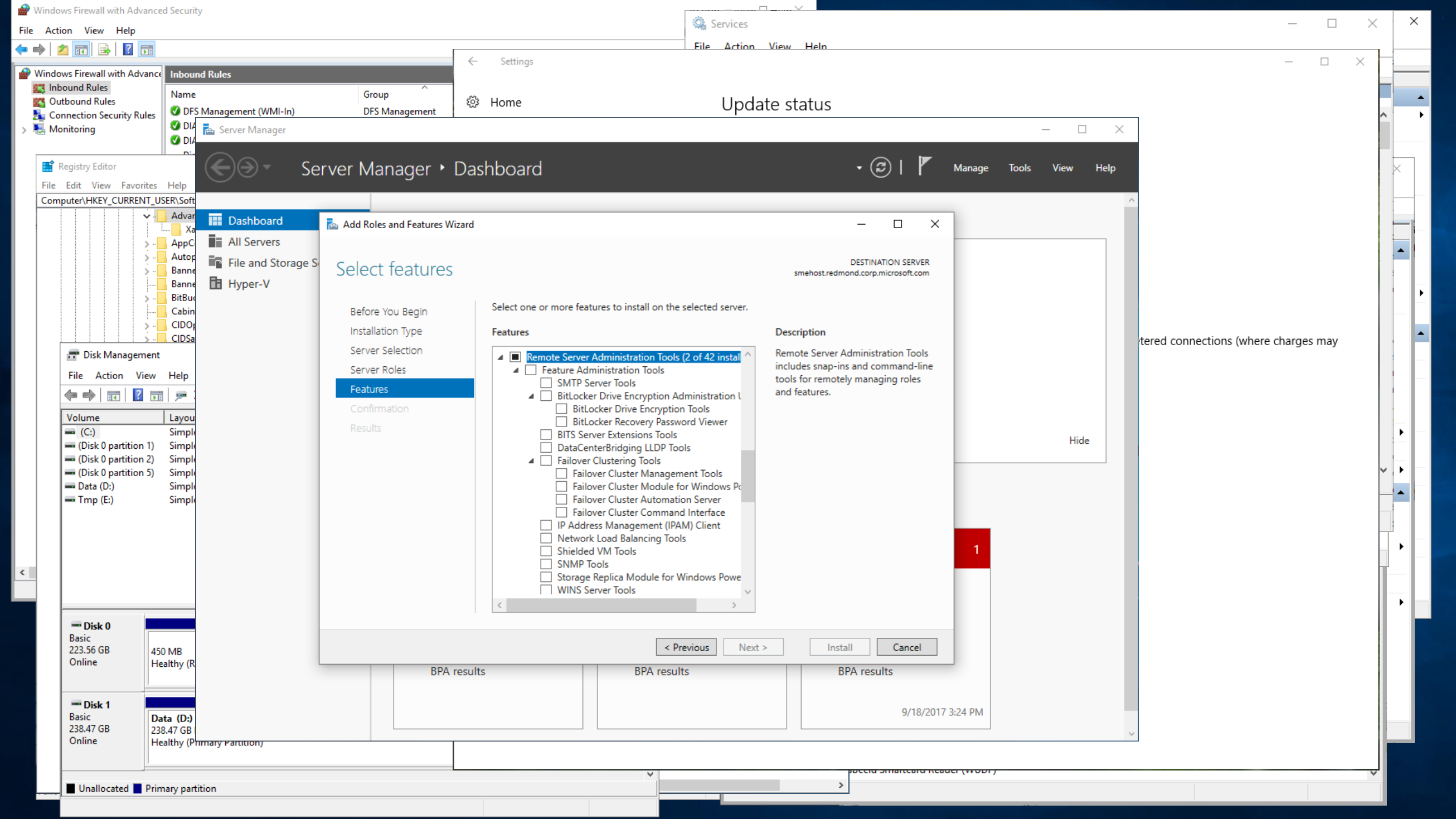
### Alarms & Clock

- Alarm
- World Clock
- Timer
- Stopwatch

00:00:51.33

Refresh Play Share





- Windows Firewall with Advanced Security
- Inbound Rules
- Outbound Rules
- Connection Security Rules
- Monitoring

Name	Group
DFS Management (WMI-In)	DFS Management
...	...

Computer\HKEY\_CURRENT\_USER\Software

Volume	Layout
(C:)	Simple
(Disk 0 partition 1)	Simple
(Disk 0 partition 2)	Simple
(Disk 0 partition 5)	Simple
Data (D:)	Simple
Tmp (E:)	Simple

<b>Disk 0</b>	Basic	223.56 GB	450 MB	Healthy (R)
<b>Disk 1</b>	Basic	238.47 GB	Data (D:)	238.47 GB
				Healthy (Primary Partition)

■ Unallocated ■ Primary partition

# Update status

## Server Manager Dashboard

- Dashboard
- All Servers
- File and Storage S...
- Hyper-V

### Add Roles and Features Wizard

## Select features

- Before You Begin
- Installation Type
- Server Selection
- Server Roles
- Features**
- Confirmation
- Results

Select one or more features to install on the selected server.

#### Features

- Remote Server Administration Tools (2 of 42 installed)
  - Feature Administration Tools
    - SMTP Server Tools
  - BitLocker Drive Encryption Administration Tools
    - BitLocker Drive Encryption Tools
    - BitLocker Recovery Password Viewer
  - BITS Server Extensions Tools
  - DataCenterBridging LLDP Tools
  - Failover Clustering Tools
    - Failover Cluster Management Tools
    - Failover Cluster Module for Windows PowerShell
    - Failover Cluster Automation Server
    - Failover Cluster Command Interface
  - IP Address Management (IPAM) Client
  - Network Load Balancing Tools
  - Shielded VM Tools
  - SNMP Tools
  - Storage Replica Module for Windows PowerShell
  - WINS Server Tools

#### Description

Remote Server Administration Tools includes snap-ins and command-line tools for remotely managing roles and features.

Hide

DESTINATION SERVER  
smehost.redmond.corp.microsoft.com

< Previous   Next >   Install   Cancel

BPA results	BPA results	BPA results
		9/18/2017 3:24 PM

tered connections (where charges may

1

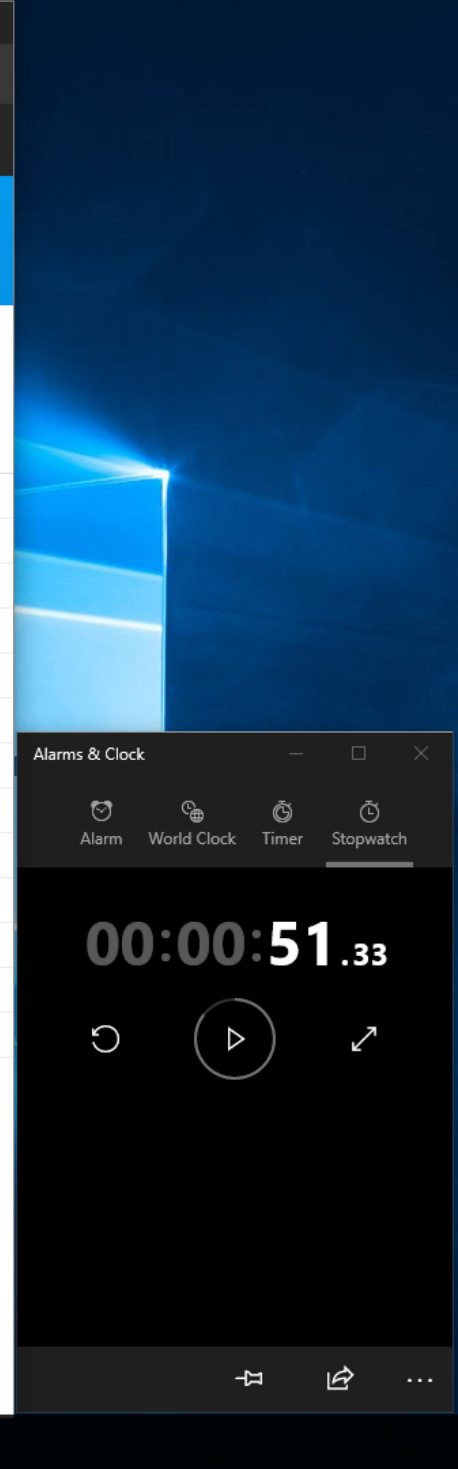


# Project Honolulu (Technical Preview)

## All Connections

+ Add Connect Manage As Remove 13 items Search

Name ↑	Type	Status	Last Checked	Managing As
jeffrey-cartman.redmond.corp.microsoft.com	Server	✓ Online	9/18/2017 6:51:54 PM	REDMOND\jeffrey
jeffrey2012.redmond.corp.microsoft.com	Server	✓ Online	9/18/2017 6:51:54 PM	REDMOND\jeffrey
jeffreydfgw.redmond.corp.microsoft.com	Server	✓ Online	9/18/2017 6:51:54 PM	REDMOND\jeffrey
jeffreygw.redmond.corp.microsoft.com	Server	✓ Online	9/18/2017 6:51:52 PM	REDMOND\jeffrey
jeffreyserver.redmond.corp.microsoft.com	Server	✓ Online	9/18/2017 6:51:51 PM	REDMOND\jeffrey
jeffreyws16.redmond.corp.microsoft.com	Server	✓ Online	9/18/2017 6:51:51 PM	REDMOND\jeffrey
jwclu1-01.redmond.corp.microsoft.com	Server	✓ Online	9/18/2017 6:51:52 PM	REDMOND\jeffrey
jwclu1-02.redmond.corp.microsoft.com	Server	✓ Online	9/18/2017 6:51:54 PM	REDMOND\jeffrey
jwclu1-03.redmond.corp.microsoft.com	Server	✓ Online	9/18/2017 6:51:54 PM	REDMOND\jeffrey
jwclu1-04.redmond.corp.microsoft.com	Server	✓ Online	9/18/2017 6:51:54 PM	REDMOND\jeffrey
jwcores16-02.redmond.corp.microsoft.com	Server	✓ Online	9/18/2017 6:51:54 PM	REDMOND\jeffrey
jwsandbox.redmond.corp.microsoft.com	Server	✓ Online	9/18/2017 6:51:54 PM	REDMOND\jeffrey
smehost.redmond.corp.microsoft.com	Server	✓ Online	9/18/2017 6:51:07 PM	REDMOND\jeffrey



Alarms & Clock

Alarm World Clock Timer Stopwatch

00:00:51.33

⏮ ⏪ ⏩ ⏭

# E o SMT?

Em Preview a partir de fevereiro 2016-junho 2017

"ferramentas de gerenciamento do servidor" no Azure

- Gestão de qualquer lugar
- Gestão de qualquer plataforma
- Experiência integrada
- Melhoria contínua
- Suporte de versão prática
- GUI-foco de investimento

The screenshot displays the Azure Remote Server Management UI. The top navigation bar includes icons for Settings, Restart, Shut down, Manage as, Delete, and Refresh. A search bar is located at the top left. The main content area is divided into several sections:

- Essentials:** Displays key system information such as Resource group (saverma-prod-rg), Status (OK), Location (Central US), Subscription name (Remote Server Management UI DEV), and Subscription ID (71af18de-20e8-4f84-abfe-42bd5729d113). It also shows Connection (saverma-nano1), Gateway (saverma-prod-gw (OK)), User name (redmond\saverma), Server (SAVERMA-NANO1), and Operating system (Microsoft Windows Server 2016 Technical...).
- Performance:** Features two charts: CPU usage for Intel(R) Xeon(R) CPU L5630 @ 2.13GHz (0.15%) and Memory usage (13.98%). Both charts include a 60-second and 30-second history view.
- Network adapters:** Shows 1 adapter with IP address 10.198.72.198 and speed 1 Gbps.
- Tools and Settings:** A sidebar on the left lists various management tools and settings, including Locks, Automation script, Properties, Computer identification, Certificate Manager, Device Manager, Event Viewer, File Explorer, Firewall rules, Local Administrators, Network settings, PowerShell, Processes, Registry Editor, and Roles and Features.

# Top feedback dos clientes sobre o SMT

Os usuários disseram, "ótimo, mas..."

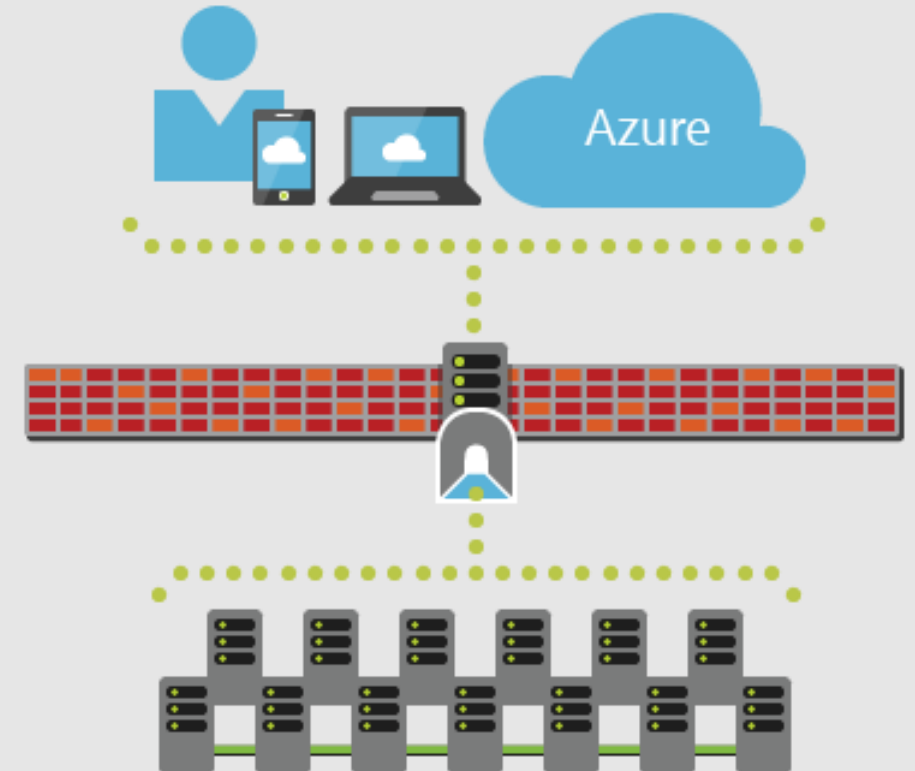
- Eu tenho ambientes que não são conectados à Internet
- Tenho requisitos de conformidade para ter controle total sobre todos os aspectos da implantação, de ponta a ponta

Os parceiros disseram, "ótimo, mas..."

- Eu ofereço VMs hospedadas e quero dar aos clientes uma experiência de gestão que não está vinculado a uma nuvem concorrente como Azure
- Ofereço soluções de infraestrutura para as quais a introdução de uma dependência de nuvem on-line para a gestão não é um ajuste natural

**#1 pedido superior em UserVoice para SMT**

"tornar as ferramentas de gerenciamento de servidor baseadas em Azure disponíveis no local sem qualquer conexão de nuvem"



# Projeto "Honolulu"

Gerenciamento baseado em navegador flexível e implantado pelo cliente, começando com ferramentas principais para solução de problemas, configuração e manutenção.

## SMT

- Gestão de qualquer lugar
- Gestão de qualquer plataforma
- Experiência integrada
- Melhoria contínua
- Suporte de versão prática
- GUI-foco de investimento

## Honolulu

- Sim – além da futura integração opcional com Azure
- Sim – solução baseada em navegador
- Sim – começando com ferramentas centrais
- Sim – WS 2012, 2012 R2, 2016 +
- Sim!

Flexibilidade e valor adicionais:

- Aproveitando tecnologias de código aberto
- Construindo extensibilidade na arquitetura
- Projetando para oportunidades de integração
- Protegendo e otimizando para soluções de segurança



# Honolulu - 2017

Abril



Alfa 1.0.0

- NDA visualização privada
- Primeira versão
- Gerenciar WS 2016

Maio



Alpha 1.0.1

- Correções
- Atualização mensal cadência

Junho



Alpha 1.0.2

- Gerenciar WS 2012 e 2012 R2
- Mais ferramentas e funcionalidade
- Segurança: voltas
  
- SMT retirado em 30 de junho de 2017

Julho



Private Preview 1.0.3

- Mais funcionalidades
- Segurança: SSO

Agosto



Private Preview 1.0.4

- Private Preview 1.0.5
- Estabilização
- Ajuste e acabamento
- Hyper-convergado
- Réplica de armazenamento
- Extensão MGMT

Setembro



Private Preview 1.0.6

- Estabilização
- Ajuste e acabamento

Visualização técnica

• Lançamento público

# Honolulu FAQ

Custo	Navegar usando	Instala em	Gerencia	Conectividade
Gratuito!!!!	 Borda  Chrome	Windows Server, Versão 1709 Windows Server 2016  Windows 10	Windows Server, Versão 1709 Windows Server 2016 Windows Server 2012 R2 Windows Server 2012 Servidor Microsoft Hyper-V	Azure não exigido Internet não é necessária  AD não é obrigatório
Segurança	Configuração	Posicionamento	Feedback	Extensões
Https  Delegação	IIS não exigido Agentes não exigidos SQL não exigido  WMF 5,1 necessária em WS 2012 e 2012 R2	Evolução das ferramentas "in-box"  Complementar a RSAT, SC e OMS	via UserVoice	Early Alpha SDK em visualização privada

# Próximos Passos



Baixe e teste o Honolulu hoje!

<https://aka.ms/HonoluluDownload>



Visite o TechSummit São Paulo 2017 | 6 e 7 dezembro

[www.microsoft.com/pt-br/techsummit](http://www.microsoft.com/pt-br/techsummit)



<https://github.com/fabioharams>



Envie seu feedback via UserVoice

<https://aka.ms/HonoluluFeedback>



Participe do programa TAP para o Early Alpha SDK Access

<https://aka.ms/JoinServerTAP>

